

Western Oregon / SW Washington Painters JATC  
 Oregon #MA-1024 & Washington #241  
 12687 NE Whitaker Way Portland, OR 97230  
 Phone 503-287-4856 ❖ Fax 503-258-1767  
 www.paintertraining.org

**Public Notice: November 1, 2011**  
**APPRENTICESHIP OPPORTUNITIES**

\*Registered with the State of Oregon\*

Western Oregon & SW Washington Painters JATC will be accepting applications  
 for the following trade:

**PAINTER**

**Minimum Qualifications:**

1. Must be at least 17 years of age.
2. Must be a high school graduate or have a GED equivalent and submit copy of a high school diploma or GED certificate. (College diploma cannot be accepted as a substitute.) Documents in other languages must be translated into English.

**Applications are accepted:**

	<b>PORTLAND AREA</b>
<b>When</b>	<b>Every Tuesday</b> 9:00 AM to 4:30 PM January thru September 2012
<b>Where</b>	Regional Training Center 12687 NE Whitaker Way Portland, OR 97230
<b>Contact</b>	Training Center staff 503-287-4856

	<b>EUGENE AREA</b>
	<b>By Appointment</b> January thru September 2012
	Local Union #1277 541 Willamette, Ste 105 Eugene, OR 97402
	Patrick Smith 541-747-1884

**Note: Application must be made in person and completed on site.**

**Selection Process:**

Ranked list determined by personal interview (see page 3). Applicants will be notified and must attend an Orientation class before they are sent to work. Ranked lists will be created by the end of the third week of each month January through October. Complete selection process is available on request.

**Note:** Most employers will require an apprentice to:

- have a driver's license
- take a substance abuse test

**Availability of Jobs (Waiting List):**

This notice does not mean that we have job openings at this time, but is to establish a waiting list for use when jobs become available. Most work opportunities are in the summer months.

**Geographical Area:**

**In Oregon:** Multnomah, Washington, Clackamas, Columbia, Marion, Polk, Linn, Benton, Lincoln, Douglas, Lane, Jackson, Josephine, Coos, Curry, and Yamhill Counties.

**In Washington:** Clark, Klickitat, Morrow, Skamania, Cowlitz, Wahkiakum Counties and that portion of Pacific County south of a straight line made by extending the north boundary line of Wahkiakum County west to the Pacific Ocean.

## PAINTER / DECORATOR

### The Work:

Painters and Decorators prepare and paint a diverse array of surfaces. There are three main areas of industry:

- *Commercial* (everything from small businesses to huge skyscrapers)
- *Industrial* (steel structures, tanks, bridges, water and sewage treatment plants)
- *Residential* (homes and small apartments).

Painters need to be skilled with a wide variety of hand and power tools, depending on the type of surface preparation and coating required. The work is both challenging and varied.

### Working Conditions:

Work is conducted indoors and outdoors at floor level, on ladders, rigging and scaffolding. Painters and decorators use a variety of chemicals and can be exposed to fumes from paints and solvents. Workers may have to travel great distances to work sites. Jobs vary in time from a few days to as long as a year or more. Hours may include working at night.

### Wages and Benefits:

Registered Painter Apprentices start at 70% of Journeyman wage and are re-evaluated every six months for advancement.

1 <sup>st</sup>	1,000 hour period	70% of average wage
2 <sup>nd</sup>	1,000 hour period	70% of average wage
3 <sup>rd</sup>	1,000 hour period	80% of average wage
4 <sup>th</sup>	1,000 hour period	85% of average wage
5 <sup>th</sup>	1,000 hour period	90% of average wage
6 <sup>th</sup>	1,000 hour period	95% of average wage

As of April 1, 2011 the 1<sup>st</sup> period wage in the Portland area was approximately \$14.00 based on an average journeyman wage of \$20.00. Family health care and pension when eligible. Wages are subject to union renegotiation and may vary by area and type of work.

### The Apprenticeship:

The apprenticeship consists of 6,000 hours of on-the-job training and an additional 432 hours of related classroom instruction. Related training is usually conducted in the evening and sometimes on Saturday, on the apprentice's own time. Satisfactory progress must be maintained in related training classes.

Typically it takes approximately 3 years to complete the program.

The Western Oregon & SW WA Painters JATC is a non-discriminatory program.  
WOMEN AND MINORITIES ARE ENCOURAGED TO APPLY.

Veterans: This program qualifies for VA Educational Assistance programs.

## **Painter/Decorator Application and Interview System**

### **DIRECT ENTRY**

This program offers direct entry (automatic placement at the top of the waiting list by date of application) to:

- **veterans** with Honorable Discharge and DD214 within the past 24 months.
- **graduates of certain pre-apprentice programs** who apply within two years of graduation. Currently these programs include approved Job Corps centers. Applicants must bring their completion certificates.

Applicants who don't qualify for direct entry will follow the Application and Interview System:

1. Apply to the program and meet minimum qualifications
2. Attend an Orientation when notified (always the third Monday of the month following the month the completed applications were received). Applicants who do not attend the orientation will not be placed in the ranked pool of eligibles.
3. Attend an interview

Applicants who are accepted to the program and have attended the Orientation class will be scheduled to return for a personal interview.

Each qualifying applicant will be interviewed by members of the Joint Apprenticeship and Training Committee (JATC). Following the interview, the committee will assign a numerical score for that applicant.

Applicants will be placed in descending order in the RANKED POOL based on the score earned during the personal interview process. This means that applicants with higher scores will place higher on the waiting list for jobs.

It is possible for a new applicant to place higher than an earlier applicant by earning a higher interview score. If two or more applicants have identical scores, those who applied earlier will place higher on the list.

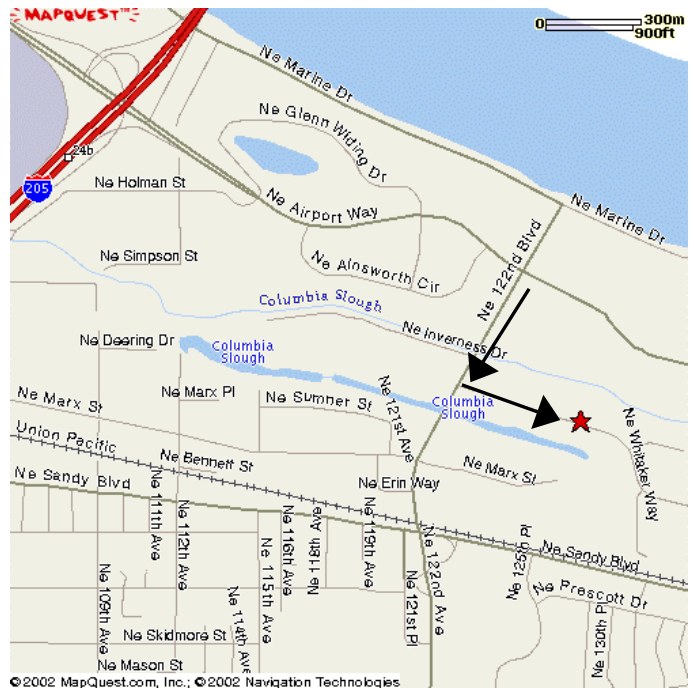
## PORTLAND AREA

12687 NE Whitaker Way

The apprenticeship office is located east of the Portland International Airport at:

From I-205:  
take Airport Way EAST \*.  
Go east to 122<sup>nd</sup> Ave.  
Turn right (south) on 122<sup>nd</sup> Ave.  
Turn left (east) on Whitaker Way.

(\* Exit 24-B for northbound traffic)



## EUGENE AREA

Local Union #1277  
541 Willamette, Ste 105  
Eugene, OR 97402

